

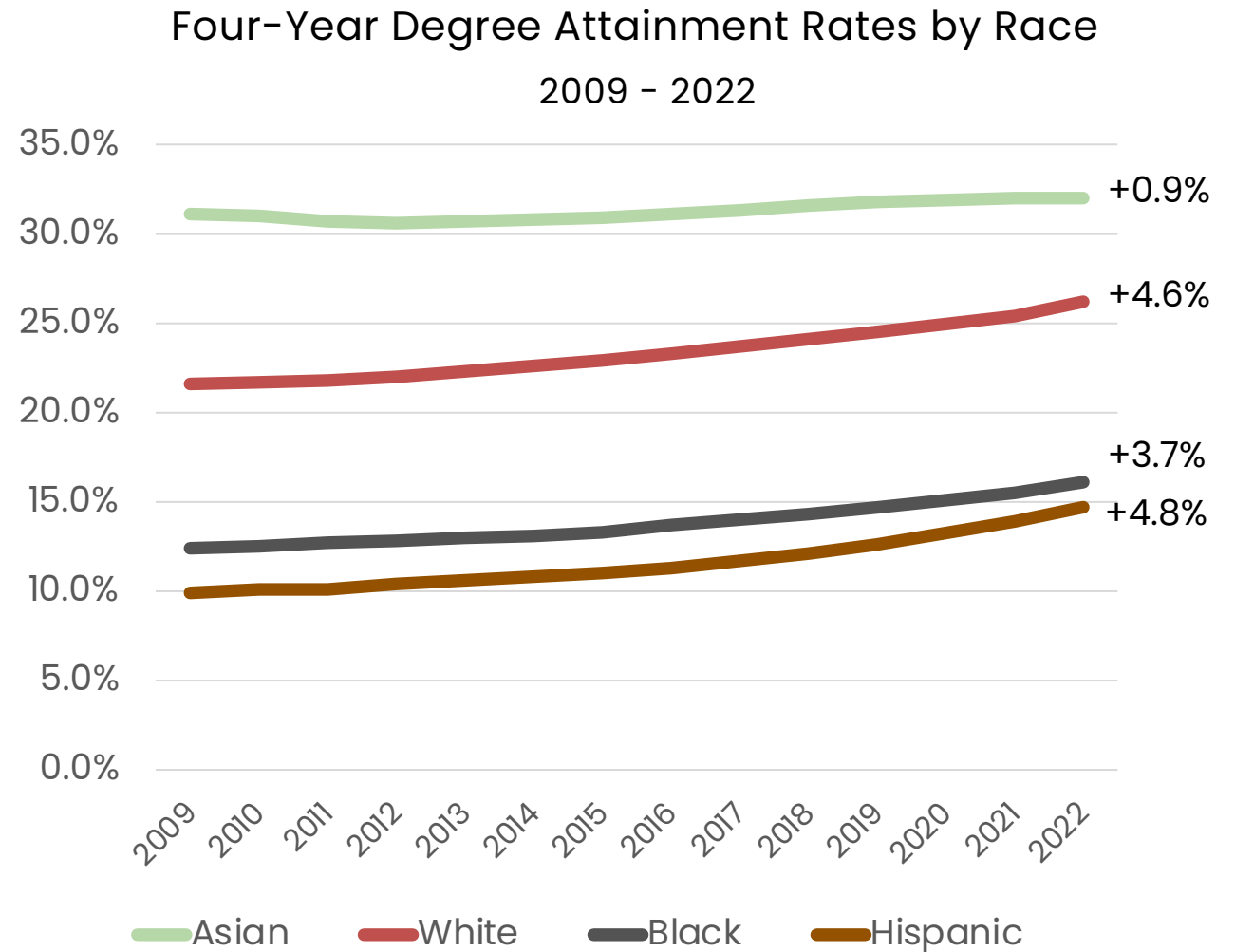
Today's Student Experience Lab

Helping today's college students make the absolute most of the time, energy, and money they invest in their education.



kinetic seeds

**Let's face it.
While attainment rates
inch ever upward, the
progression of equity
has been painfully slow.**



Source: [A Stronger Nation](#), Lumina Foundation (no data for 2020)

AN URGENT TRUTH

Traditional approaches to student success have long **excluded, overlooked, and silenced** the voices they are meant to support, especially those from underrepresented and marginalized communities.



“Sometimes it feels like institutions are not set up for people like me. I feel like I don’t belong here, and often, people invalidate that by just saying, ‘oh, you do belong here.’ Well, it certainly hasn’t felt that way.”

Iyanna

Black Female, First-Generation, 3rd Year Student

“I feel affirmed in spaces where I visibly have a place and I'm very visibly recognized as a person taking up space, and where that is met with acceptance, validity and support.”

Marcus

Non-Binary, First-Generation Hispanic Sophomore



We need to do more than just recognize diversity—we must tackle the root issues of inclusion and the power imbalances that impact who makes it to graduation day and who does not.

Three Realities Hinder the Progression of Equity

01

There's a silent gap in student-centered change.

Approaches to institutional transformation do not encourage, nor allow, collaboration between today's students and higher education decision-makers.

02

We sideline students from shaping their own futures.

With few opportunities for today's students to instigate change, plans for transformational change are designed for students but not with them resulting in change agendas that are misaligned with the realities of students' lived experiences.

03

You can not transform what you do not include.

Today's students are the primary bearers of systemic inequities which is why their active participation and inclusion in educational reform are critical to creating fair and just learning environments.

What's the answer?

Elevate and empower the voices of today's students. That's what Today's Student Experience Lab is all about.



Learn from and with historically marginalized voices of today's students and then amplify their experiences to decision-makers so they may implement changes that foster an inclusive and equitable educational environment for all.



Alter traditional power dynamics to empower and engage today's students to have a direct impact on shaping the programs, policies, and practices that govern their academic journey.



Create essential strategies, tools, and resources for integrating student perspectives into institutional transformation, ensuring their experiences are understood to shape a more inclusive education system.



Lab Approach

How we do it

Action **RESEARCH**

Institutional **CHANGE STRATEGIES**

Experiential Learning for **STUDENT GROWTH**

Examples include:

- Exploring the [dimensions of trust \(or mistrust\)](#) between students and institutions, including the realities of how higher education either won, violated, or lost the trust of students and how trust affects the value of a college education.
- Exploring ways to foster a campus [culture free from mental health stigma](#), including the interplay of community support and institutional responsiveness.

Action RESEARCH

1. **Qualitative and quantitative research** to engage student cohorts to deeply assess and comprehend the evolving landscape of student success through the lived experiences and expertise of today's students.
2. **Actionable frameworks** that empower students and institutions to implement equitable policies, innovative academic programs, and effective support systems.

Institutional **CHANGE STRATEGIES**

Examples include:

- The [Shift Power. Share Power. engagement framework](#) facilitates student-centric institutional transformation by promoting shared power between students and educators to advance equity.
- The [Thrive Method](#) delivers a shared philosophy and approach to student engagement that allows institutions to assess how intentional they are in the design of student-centered curriculum, policies, practices, programs, and support services.

1. Strategic **innovation plans** that bring student voices to the forefront of institutional change.
2. **Capacity-building workshops and targeted guidance** with students and stakeholders to reform and revamp program and support services informed by direct student feedback and involvement.
3. **Faculty and staff training and resources** to effectively support and sustain new initiatives.

Experiential Learning for **EMPOWERMENT**

Example includes:

- Developed by, with, and for college students, the [Voices of Power](#) engagement framework supports a student's ability to increase their agency and autonomy in decision-making processes that affect both their educational journey as well as the journeys of future college students.

1. Students are immersed in a variety of dynamic roles thoughtfully designed to integrate with the **core principles of hands-on learning**.
2. Through **active participation**, students draw on their personal experiences to meet the real-world challenges we present to them.
3. In addition to gaining new skill sets, students are offered **financial compensation** and are duly **recognized and credited for their contributions**, ensuring their efforts are acknowledged academically and professionally.

AN URGENT OPPORTUNITY

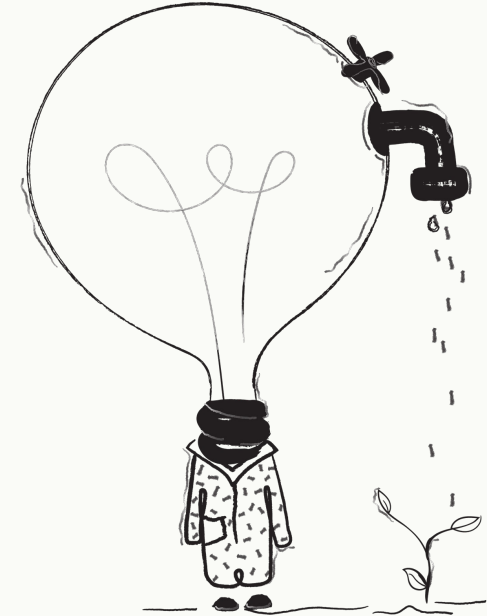
What we've begun is a **beacon of hope** in a landscape that far too often fails to amplify the voices of those most affected by the structural flaws and inequities in higher education.

The Opportunity

Today's Student Experience Lab, born from the innovative minds at Kinetic Seeds, elevates student voices in the transformative changes taking place across higher education. Our research confirms that engaging students, especially those from underserved backgrounds, in dialogues about equity and change is crucial to any transformation process.

If you are a college or university, consider partnering with us to tap into a wealth of insights from diverse student populations or collaborate to develop your own research action plan.

If you are a funder, we are currently looking for investment to support our transition from a robust set of pilot projects to a community of impact able to share innovative solutions and best practices for student engagement and equity in education.



Contact Information
Christine Flanagan
President, Kinetic Seeds
cflanagan@kineticseeds.com
401.359.1979

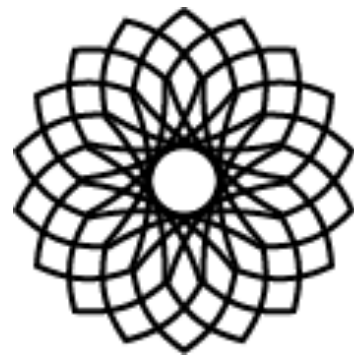
About **Kinetic Seeds**

Working at the intersection of innovation and behavior change, Kinetic Seeds is a design consultancy tackling complex educational challenges. Our approach uncovers powerful insights and opportunities generated by liberatory design-thinking methodologies and then translates them into new and engaging student experiences.

Woven into our DNA is the belief that students' voices can be instruments of meaningful, lasting change. Our expertise engaging students has supported a full range of stakeholder efforts – from institutions to state systems – to lift-up student voice and more assuredly address challenges in the education ecosystem.

We purposefully seek out and work with partners who believe diversity is part of our unique social fabric and key to human flourishing and who are committed to rolling up their sleeves to consciously “design out” the inequities baked into our systems and structures.

www.kineticseeds.com



kinetic seeds